

Performance - No Shade 916 Euclid, 916 Euclid Street NW

Shading Heatmap



Shading by Field Segment

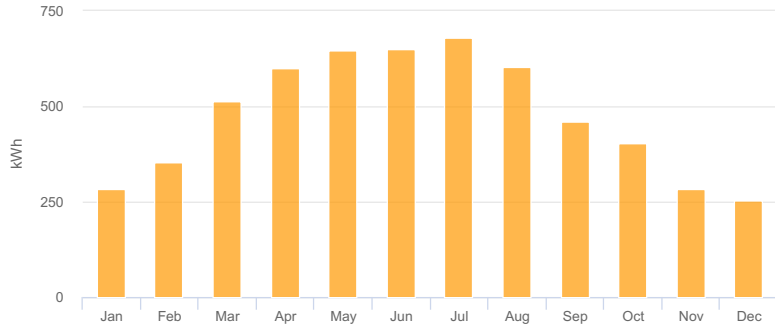
Description	Tilt	Azimuth	Modules	Nameplate	Shaded Irradiance	AC Energy	TOF ²	Solar Access	Avg TSRF ²
A-1	2.0°	172.0°	12	3.60 kWp	1,565.4kWh/m ²	4.58 MWh ¹	86.8%	100.0%	86.8%
A-2	2.0°	175.0°	3	900.0 Wp	1,564.3kWh/m ²	1.15 MWh ¹	86.8%	99.9%	86.7%
Totals, weighted by kWp			15	4.50 kWp	1,565.2kWh/m ²	5.73 MWh	86.8%	100.0%	86.7%

¹ approximate, varies based on inverter performance
² based on location Optimal POA Irradiance of 1,804.3kWh/m² at 36.0° tilt and 181.7° azimuth

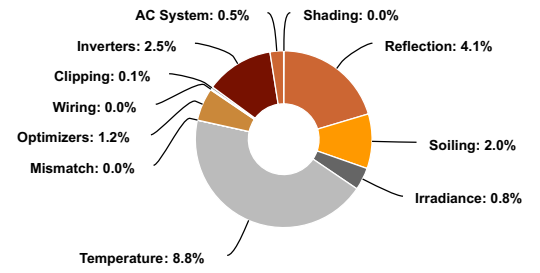
Solar Access by Month

Description	jan	feb	mar	apr	may	jun	jul	aug	sep	oct	nov	dec
A-1	100%	100%	100%	100%	100%	100%	100%	100%	100%	100%	100%	100%
A-2	100%	100%	100%	100%	100%	100%	100%	100%	100%	100%	100%	100%
Solar Access, weighted by kWp	100.0%	100.0%	100.0%	100.0%	100.0%	100.0%	100.0%	100.0%	100.0%	100.0%	100.0%	100.0%
AC Power (kW)	283.1	354.4	514.0	599.1	647.4	650.4	679.4	602.0	460.3	404.3	281.9	254.4

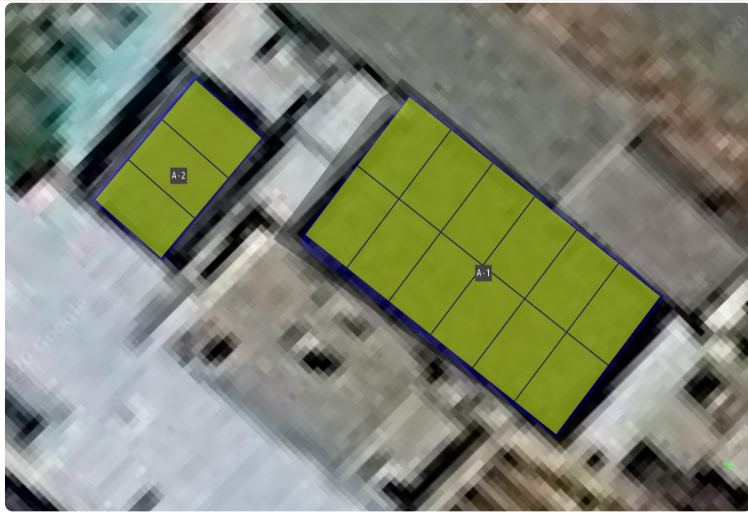
Monthly Production



Sources of System Loss



Southwestern Angle



Southeastern Angle

